

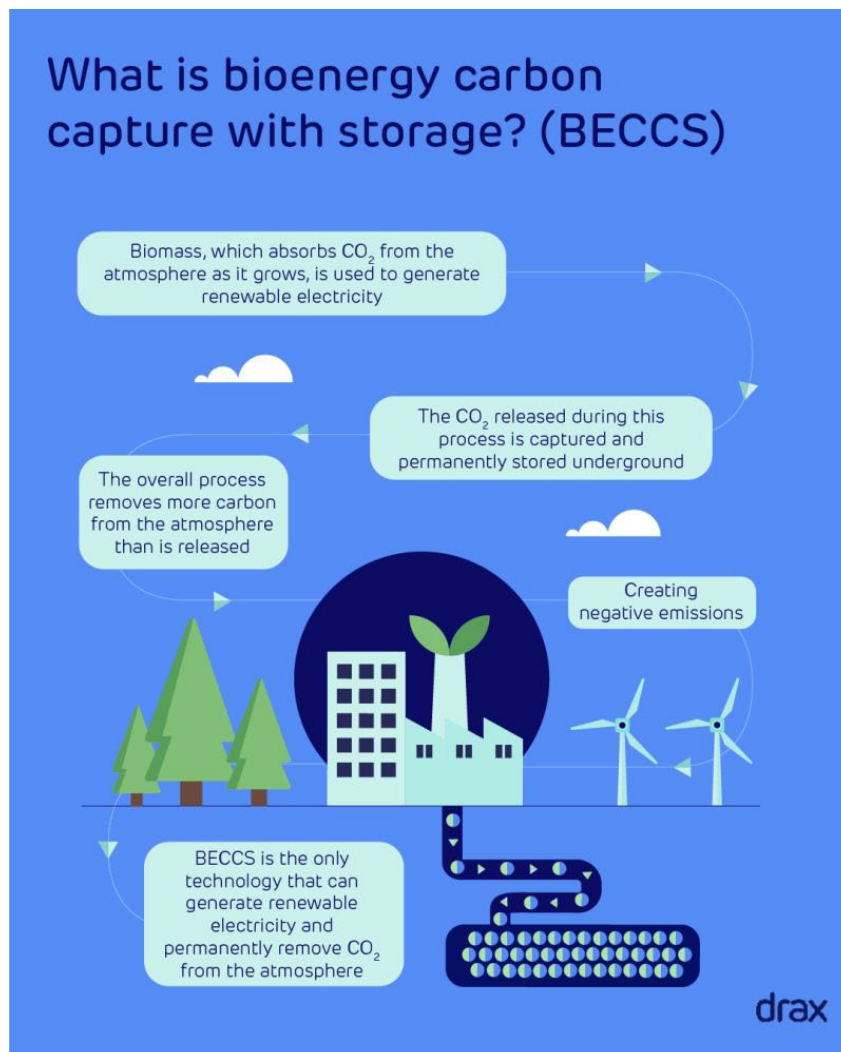
SENT TO LSU AGCENTER/LOUISIANA FOREST PRODUCTS DEVELOPMENT CENTER - FOREST SECTOR / FORESTY PRODUCTS INTEREST GROUP



## Negative emissions are needed to fight the climate crisis. 🌍

[#BECCS](#) is a unique CDR that uses [#biomass](#) to generate renewable electricity while also capturing carbon from the atmosphere. 🌿

👉 Learn more: <https://lnkd.in/euMSkaek>. Activate to view larger image,





2 June 2023



**SENT TO LSU AGCENTER/LOUISIANA FOREST PRODUCTS DEVELOPMENT CENTER - FOREST SECTOR / FORESTY PRODUCTS INTEREST GROUP**

-----  
Richard P. Vlosky, Ph.D.  
*Crosby Land & Resources Endowed Professor of Forest Sector Business Development  
Director, Louisiana Forest Products Development Center  
Room 227, School of Renewable Natural Resources  
Louisiana State University, Baton Rouge, LA 70803  
Phone (office): (225) 578-4527; Mobile Phone: (225) 223-1931  
[rvlosky@agcenter.lsu.edu](mailto:rvlosky@agcenter.lsu.edu)*

-----  
Chair, Agricultural Faculty Council, LSU AgCenter/College of Agriculture

Scientific Board Member (<https://www.forest-journal.com/>)

