

SENT TO LSU AGCENTER/LOUISIANA FOREST PRODUCTS DEVELOPMENT CENTER - FOREST SECTOR / FORESTY PRODUCTS INTEREST GROUP

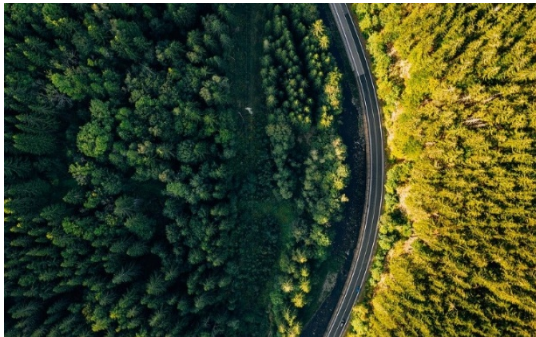
## The Outlook | June 2021

*A trusted source of environmental information*



### Mid-Year Review

Please take the time this month to catch up on any of the articles you may have missed along the way as we reach the half-way point in 2021.



[Forest Certification Update 2021: The Pace of Change](#)



[The Forest Certification Experience - A Commentary by Dovetail Partners](#)

SENT TO LSU AGCENTER/LOUISIANA FOREST PRODUCTS DEVELOPMENT CENTER - FOREST SECTOR / FORESTY PRODUCTS INTEREST GROUP



[Affordable Housing Opportunities with Mass Timber](#)



[Biomass Energy: A Climate, Conservation, & Livelihoods Challenge](#)

## Bowyer presents to the University of Minnesota Retirees Association

In this presentation, Professor Emeritus and Dovetail Associate, Jim L. Bowyer, addresses population and economic growth, consumption, raw material needs, the environment, ethics, and even a bit of politics. Based on his book, *The Irresponsible Pursuit of Paradise*, the presentation focuses on environmental policy.

[Watch Now](#)



## Introducing Dovetail's Summer Interns

SENT TO LSU AGCENTER/LOUISIANA FOREST PRODUCTS DEVELOPMENT CENTER - FOREST SECTOR / FORESTY PRODUCTS INTEREST GROUP



**Nina Fagerman**

I'm from Wausau Wisconsin and currently attend University of St. Thomas majoring in Business with a minor in Spanish. At Dovetail, I plan to work on communication aspects such as the website, social media, and newsletters, which may also include supporting work related to the Women's Forestry Congress.

---



**Eamon McGuigan**

I am from Madison, WI and am currently attending Macalester College. I'm pursuing a degree in environmental studies with a concentration in sustainable design. At Dovetail, I plan to research forest regrowth and potentially-improvable methods of forest restoration/drawing connections between restoration and the built environment.

---



SENT TO LSU AGCENTER/LOUISIANA FOREST PRODUCTS DEVELOPMENT CENTER - FOREST SECTOR / FORESTY PRODUCTS INTEREST GROUP

### Cameron Payne

Hello, my name is Cameron Payne and I am from Charleston WV. I am currently a senior at Macalester College and am majoring in Economics and Minor in Geography. At Dovetail, I plan to review past research on economic policy and expand upon that research, especially adding both a local and international perspective to the work.

### Vivian Powell

Hello! My name is Vivian and I'm from Bainbridge Island, Washington. I am going into my third year at Macalester College with a double-major in Statistics and Environmental Studies; I'm passionate about finding new and sustainable solutions to environmental challenges and I love coding and working with data and numbers. At Dovetail, I'll be investigating how the pandemic has impacted different aspects of sustainability and how this might affect ecosystems and human communities.

---

## Dovetail staff participates in Reforestation Hub working group

The Nature Conservancy and American Forests have published a new tool, the [Reforestation Hub](#), that highlights the best opportunities for reforestation across the U.S. and shows us that Minnesota's reforestation opportunity could be as high as 3.6 million acres. Katie Fernholz and Ashley McFarland, Dovetail staff, are actively participating in a working group to develop a strategy for implementing what has been affectionately coined Minnesota Million - one million acres reforested in the state. This group is tackling the challenges facing this goal, from seedling production to reforestation management. To learn more about this exciting work, check out this [article](#) announcing the Reforestation Hub.



SENT TO LSU AGCENTER/LOUISIANA FOREST PRODUCTS DEVELOPMENT CENTER - FOREST SECTOR / FORESTY PRODUCTS INTEREST GROUP



### **Dovetail Partners Addresses Sustainable Forestry and Carbon in WoodWorks Workshop**

[Katie Fernholz, Dovetail President](#) and CEO, presented Sustainable Forestry: Renewable Materials Storing Carbon. You can find that presentation, among others, on the [Wood Works website](#).

Free recordings of those presentations can be found through [The Wood Institute](#).

### **Hartman, Dovetail board member, nominated as Emerging Leader in Food and Agriculture**

**Cast your vote now!** [Emerging Leaders in Food & Ag](#) aims to develop, build community amongst, and celebrate visionary leaders across the agriculture supply chain in order to ensure that the enormous challenges facing food and agriculture today are addressed by a new generation of innovative, engaged leaders.

Hartman, who joined the [Dovetail board](#) in 2020, serves as the Executive Director of the [Artisan Grain Collaborative](#), and was nominated for her leadership in strengthening the regional grain economy. To learn more about her work, which included the development of the [Neighbor Loaves program](#) that supported farmers, millers, bakers, and those in need through the pandemic.



[Cast Your Vote!](#)

*Dovetail supports progress and change to address inequality.*

SENT TO LSU AGCENTER/LOUISIANA FOREST PRODUCTS DEVELOPMENT CENTER - FOREST SECTOR / FORESTY PRODUCTS INTEREST GROUP

## Connect with Us



[www.dovetailinc.org](http://www.dovetailinc.org)

+1-612-333-0430

Copyright © 2021 Dovetail Partners, Inc. All Rights Reserved.

Dovetail Partners is a 501(c)(3) nonprofit organization.  
Dovetail Partners, Inc. is an equal opportunity employer.

Dovetail Partners Inc.

| 528 Hennepin Ave., Suite 703, Minneapolis, MN 55403

---

Richard P. Vlosky, Ph.D.

*Director, Louisiana Forest Products Development Center*

*Crosby Land & Resources Endowed Professor of Forest Sector Business Development*

Room 227, School of Renewable Natural Resources

Louisiana State University, Baton Rouge, LA 70803

Phone (office): (225) 578-4527; Fax: (225) 578-4251; Mobile Phone: (225) 223-1931

Web Site: [www.LFPDC.lsu.edu](http://www.LFPDC.lsu.edu)