



SENT TO LSU AGCENTER/LOUISIANA FOREST PRODUCTS DEVELOPMENT CENTER - FOREST SECTOR / FORESTY PRODUCTS INTEREST GROUP

All the articles are interesting so I thought I'd just pass the newsletter along. Forest2Market is a premier consulting firm.

Forest2Market Monthly News  

FOREST2MARKET

JUNE 2018 NEWSLETTER

June Poll

Based on forest inventory data available in SilvaStat360, U.S. forest growth currently exceeds removals. What is the situation in your area?

[Learn more about SilvaStat360](#)

Forest growth exceeds removals

Select

Forest growth is about equal to removals

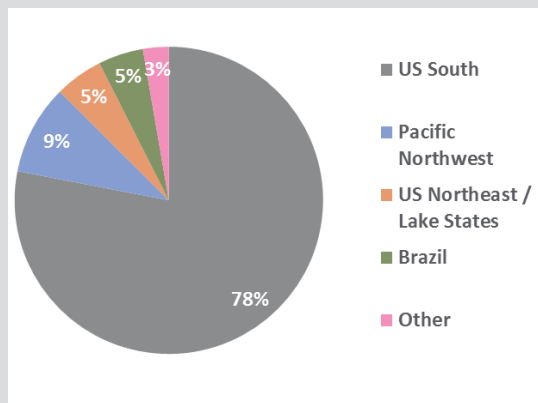
Select

Removals exceed forest growth

Select

Results From May's Poll

If your forest products company is planning capital investments in the near term, in what region will they be focused?



US South Timber Prices: 1Q2018 Performance & Outlook

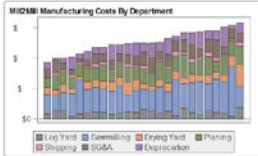
By Gabe Rogers

US South timber prices during 1Q2018 were mixed. Pulpwood products increased slightly and pine log products decreased, but the general trend of timber prices was downward in 1Q (-6 percent).

[Continue Reading...](#)



SENT TO LSU AGCENTER/LOUISIANA FOREST PRODUCTS DEVELOPMENT CENTER - FOREST SECTOR / FORESTY PRODUCTS INTEREST GROUP



The Beck Group and Forest2Market Announce Sawmill TQ, a New Service for Southern Sawmills

By Forest2Market

The Beck Group (Beck) and Forest2Market, Inc. recently announced a partnership to launch Sawmill TQ (Top Quartile), a new service for gathering and delivering Southern Yellow Pine sawmill benchmark data to industry members. The partnership combines Beck's sawmill benchmarking experience and knowledge with Forest2Market's SilvaStat360 cloud-based interactive business intelligence platform.

[Continue Reading...](#)

Madison's Lumber Reporter Moving to SilvaStat360, Forest2Market's Online Delivery Platform



By Suz-Anne Kinney

Forest2Market and Madison's announce a partnership formed to bring Madison's Weekly Lumber Report, a North American lumber price reporting service, to SilvaStat360, Forest2Market's online business intelligence platform. The Madison's/Forest2Market partnership combines Madison's lumber price data and market insights with Forest2Market's SilvaStat360 cloud-based interactive delivery platform. Madison's Lumber Reporter subscribers will have fingertip access to historic and current lumber price data that is updated weekly and available on a 24/7/365 basis.

[Continue Reading...](#)



PNW Log Costs Remain Near Record Highs

By Joel Swanton

Delivered log prices in the Pacific Northwest (PNW) have maintained near record highs through winter, and the sustained high price run since 4Q2017 is unprecedented in the region. As we head into the warmer spring and summer months, as well as wildfire season, prices are not expected to retreat any time soon.

[Continue Reading...](#)

Southern Yellow Pine Lumber Prices Hit New Record High in May

By John Greene

Southern yellow pine (SYP) lumber prices continue to climb into new record territory as we approach the summer months. Forest2Market's composite southern yellow pine lumber price spiked to a new high of \$521/MBF for the week ending May 11—a 7% jump from the previous week.



[Continue Reading...](#)



Forest Mortality Exceeds Growth in America's National Forests

By John Greene

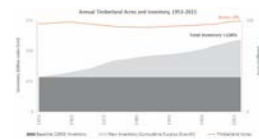
With wildfire season just a few weeks away in the Pacific Northwest (PNW), the amount of standing dead timber in western national forests is a real concern for both residents and the federal and state agencies that are tasked with fire suppression efforts and mitigating fire damage.

[Continue Reading...](#)

Carbon Accounting is Complex; Forest Benefits Are Simple

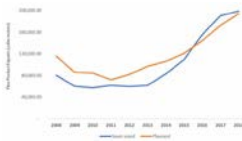
By Forest2Market

In a recent meeting with members of the forestry community, Environmental Protection Agency (EPA) Administrator Scott Pruitt said that the Agency issued a “statement of policy making clear, that future regulatory actions on biomass from managed forests will be treated as carbon neutral when used for energy production at stationary sources.” The statement went on to add that “The use of biomass from managed forests can bolster domestic energy production, provide jobs to rural communities, and promote environmental stewardship by improving soil and water quality, reducing wildfire risk, and helping to ensure our forests continue to remove carbon from the atmosphere.”



[Continue Reading...](#)

SENT TO LSU AGCENTER/LOUISIANA FOREST PRODUCTS DEVELOPMENT CENTER - FOREST SECTOR / FORESTY PRODUCTS INTEREST GROUP



Brazil's Wood Products Industry is Poised for Growth

By Marcelo Schmid

Forest2Market has closely followed the resurgence of the wood fiber market (and the pine market, specifically) in Brazil over the course of the last several years, which has occurred amid a tumultuous political environment. After a long recessionary period, current domestic market segments like packaging and panels have grown, and the outlook for pine wood products is optimistic.

[Continue Reading...](#)

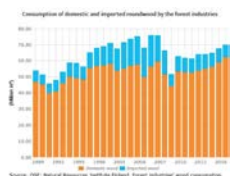
Chilean Wood Products Market Offers Export & Import Opportunities

By John Greene

The modern forest products industry is truly a global endeavor on every level. Interconnected economies and trade flows allow a vast assortment of forest products—raw materials, energy feedstocks, manufacturing provisions and finished products—to circle the globe in increasing volumes. Nations with large forest resources and forest industries are able to serve both the domestic and export markets, and they are able to participate in the global economy due to supply chain enhancements and increased overseas demand.

[Continue Reading...](#)

Product	2016	2017	2018	2019	2020
Production of wood products (m³)	1,100	1,200	1,300	1,400	1,500
Export of wood products (m³)	500	550	600	650	700
Import of wood products (m³)	600	650	700	750	800
Net export (m³)	-100	-50	0	50	100
Net import (m³)	100	50	0	-50	-100



Finland's Consumption of Domestic Roundwood Reached a new Record in 2017

By John Greene

Per a recent report from the Natural Resources Institute Finland (Luke), the total amount of roundwood consumed by the Finnish forest products industry increased in 2017 for the fifth straight year to its highest level in ten years. Forest industry roundwood consumption totaled 69.7 million cubic meters (m³) in 2017, which represents a 3 percent increase over the prior year and the highest level in nearly 40 years.

[Continue Reading...](#)

US Forest Industry Performance: April 2018

By Joe Clark

After annual revisions, published in late March, incorporating data from the US Census Bureau's 2016 Annual Survey of Manufactures, total industrial production (IP) reportedly increased by 0.9 percent (+4.3 percent YoY) in February. Manufacturing output rose by 1.3 percent (+2.7 percent YoY).

[Continue Reading...](#)



Product	Performance	Trend
Softwood Lumber	↓	↓
Softwood Plywood	↓	↓
Softwood Veneer	↓	↓
Softwood Pulp	↓	↓
Softwood Paper	↓	↓
Hardwood Lumber	↓	↓
Hardwood Plywood	↓	↓
Hardwood Veneer	↓	↓
Hardwood Pulp	↓	↓
Hardwood Paper	↓	↓
Forest Products	↓	↓



US Housing Starts Inch down in April; ‘Demographic Tailwind’ at Risk

By John Greene

US housing starts were down in April, suggesting that factors such as rising materials and labor costs are restricting new residential construction despite solid demand. These concerns continue to pose challenges to home builders seeking to meet demand and keep escalating housing prices in check.

[Continue Reading...](#)

To ensure you continue to receiving Forest2Market emails be such to add information@forest2market.com to your address book so we land in your inbox! If you received this email it is because you have expressed an interest in Forest2Market.

Forest2Market | 15720 Brixham Hill Avenue, Suite 550
Charlotte, NC 28277

Richard P. Vlosky, Ph.D.

Director, Louisiana Forest Products Development Center

Crosby Land & Resources Endowed Professor of Forest Sector Business Development

Room 227, School of Renewable Natural Resources

Louisiana State University, Baton Rouge, LA 70803

Phone (office): (225) 578-4527; Fax: (225) 578-4251; Mobile Phone: (225) 223-1931

Web Site: www.LFPDC.lsu.edu



8 June 2018



SENT TO LSU AGCENTER/LOUISIANA FOREST PRODUCTS DEVELOPMENT CENTER - FOREST SECTOR / FORESTY PRODUCTS INTEREST GROUP



President, Forest Products Society; President, WoodEMA i.a.

